

Theatre Presentations

Tuesday 9th June

- 10:00** Secrets of success in inversion
Brian Russell (Hampson-Russell)
- 11:00** Focal mechanism determination from few sensors - application to Arkema-Vauvert site (France)
Emmanuel Gaucher (Magnitude)
- 12:00** Reservoir characterization case history
Arcangelo Sena (Hampson-Russell)
- 13:00** Well calibrated seismic – Using VSP & well data to calibrate and control surface seismic processing
James Bailey (VSFusion)
- 14:00** Fracture characterization in a carbonate reservoir
Isabelle Mahé (Hampson-Russell)
- 15:00** STRATA – pre-stack inversion demo
Rebecca Goffey (Hampson-Russell)
- 16:00** Global 4D seismic inversion
Philippe Doyen (Hampson-Russell)

Wednesday 10th June

- 10:00** Non-linear calibration of complex velocity models in microseismic jobs
Emmanuel Gaucher (Magnitude)
- 11:00** Phase congruency – A carbonate case study
Brian Russell (Hampson-Russell)
- 12:00** Stochastic inversion & reservoir connectivity analysis
Philippe Doyen (Hampson-Russell)

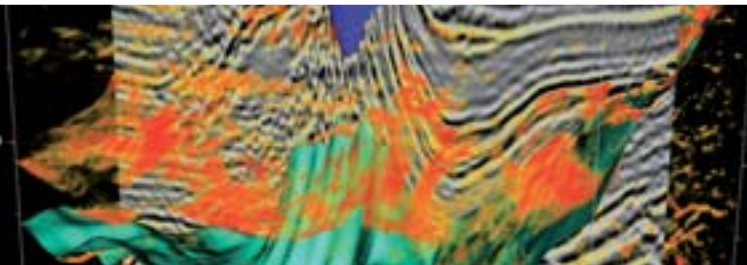
Wednesday 10th June

- 13:00** Modeling 2D lines with fluid contacts in AVO
Rebecca Goffey (Hampson-Russell)
- 14:00** 4D inversion with a 3C uplift
Isabelle Mahé (Hampson-Russell)
- 15:00** Making sense of all that AVO stuff
Brian Russell (Hampson-Russell)
- 16:00** 3DVSP - Maximizing value from the new generation 100-level VSP tool
James Bailey (VSFusion)

Thursday 11th June

- 10:00** Well calibrated seismic – Using VSP & well data to calibrate and control surface seismic processing
James Bailey (VSFusion)
- 11:00** Reservoir characterization case history
Arcangelo Sena (Hampson-Russell)
- 12:00** Fracture characterization in a carbonate reservoir
Isabelle Mahé (Hampson-Russell)
- 13:00** Multi-network microseismic monitoring of fracturing jobs. Neuquen TGR application
Emmanuel Gaucher (Magnitude)
- 14:00** Secrets of success in inversion
Brian Russell (Hampson-Russell)
- 15:00** STRATA model building using velocity control points
Rebecca Goffey (Hampson-Russell)

EAGE 2009
Amsterdam
June 8-11
Booth 720



Technical Presentations

Tuesday 9th June

08:30: Room B1: X001 Resistor Network Renormalization for Electric Resistivity Upscaling

H.H. Soleng (OHM Rock Solid Images)*

09:20: PosterBox 11: P053 The Effect of Attenuation and Velocity Dispersion on the Vibroseis Correlation Process

L.F. Sun (CGGVeritas), E. Bongajum (University of Toronto) & B. Milkereit (University of Toronto)*

09:45: Room N1+01: S004 Using Long Sweep in Land Vibroseis Acquisition

A. Egreteau (CGGVeritas), J. Gibson (CGGVeritas), F. Lin (CGGVeritas) & J. Meunier (CGGVeritas)*

10:30: Room N1+01: S005 Fold or Force?

T. Bianchi (CGGVeritas), D. Monk (Apache Corp.) & J. Meunier (CGGVeritas)*

10:55: Room B: W006 Application of Beam Migration Techniques to the Evaluation of an Exploration Prospect, Balvenie

L. Ben-Brahim (Total E&P UK Ltd), S. Varley (Total E&P UK Ltd), O. Michaud (Total E&P UK Ltd), P. Buffet (Total E&P UK Ltd), S. Hollingworth (CGGVeritas), A. Woodcock (CGGVeritas) & C. Purcell (CGGVeritas)*

11:20: Room A: V007 Time Demigration/Migration Using Curvelets

T. Nguyen (École des Mines de Paris, now at Fugro), H. Chauris (École des Mines de Paris) & G. Lambaré (CGGVeritas)*

11:45: Room B1: X008 Reservoir Parameter Estimation from Joint Inversion of Marine CSEM and Seismic AVO Data Using the Genetic Algorithms

Z. Du (OHM Rock Solid Images) & L. MacGregor (OHM Rock Solid Images)*

13:30: Room B1: X009 Multi-Network Microseismic Monitoring of Fracturing Jobs – Neuquen TGR Application

E. Robein (Total), F. Cerda (Total), D. Drapeau (Total), L. Maurel (Total Australia), E. Gaucher (Magnitude) & E. Auger (Magnitude)*

14:20: PosterBox 06: P083 Multi-Dip Estimation in n Dimensions

Y. Traonmilin (CGGVeritas), G. Lambaré (CGGVeritas), P. Herrmann (CGGVeritas), N. Deladerrière (CGGVeritas) & K. Garceran (CGGVeritas)*

15:30: Room A: V013 Azimuthal Residual Velocity Analysis in Offset Vector for WAZ Imaging

D. Leceuf (CGGVeritas), S. Navion (CGGVeritas), J.L. Boelle (Total), A. Belmokhtar (Sonatrach) & A. Ladmek (Sonatrach)*

15:55: Room L: U014 Geomechanical Modeling to Resolve Velocity Anomalies and Image Distortions below Seafloor with Complex Topography

S. Birdus (CGGVeritas)*

16:45: PosterBox 02: P068 Near-Surface Issues in TTI Wave Equation Migration from Topography

C.P. Ursenbach (CGGVeritas), R.A. Bale (CGGVeritas) & S.H. Gray (CGGVeritas)*

Wednesday 10th June

09:20: PosterBox 01: P123 Channel Tomography

G. Conroy (CGGVeritas) & R. Leggott (CGGVeritas)*

10:30: Room A: V021 Seismic Repeatability – Is There a Limit?

E. Schissele (CGGVeritas), E. Forgues (CGGVeritas), J. Echappé (CGGVeritas), J. Meunier (CGGVeritas), O. de Pellegars (Total) & C. Hubans (Total)*

10:55: Room A: V022 Simultaneous Multi-Vintage 4D Binning

E. Zabihi Naeini (CGGVeritas/University of Tehran), H. Hoeber (CGGVeritas), B. King (CGGVeritas), D. Romyantsev (CGGVeritas) & F. Büker (StatoilHydro)*

14:45: Room A: V028 3D High Resolution Parabolic Radon Filtering

P. Hugonnet (CGGVeritas), J.L. Boelle (Total E&P), M. Mihoub (CGGVeritas) & P. Herrmann (CGGVeritas)*

15:30: Room L: U029 Non-Linear Tomography for Time Imaging

G. Lambaré (CGGVeritas), N. Deladerrière (CGGVeritas), Y. Traonmilin (CGGVeritas), J.P. Touré (CGGVeritas), J. Le Moigne (CGGVeritas) & P. Herrmann (CGGVeritas)*

15:55: PosterBox 08: P216 Depth-Velocity Modelling and Imaging with Azimuthal Anisotropy in an Onshore Middle Eastern Field

S. Birdus (CGGVeritas), E. Angerer (OMV), I. Abassi (OMV) & K. Shamis (CGGVeritas)*

16:45: Room A: V032 Complete Internal Multiple Prediction for a 1D Acoustic Model

H. Masoomzadeh (CGGVeritas) & S. Grien (CGGVeritas)*

Thursday 11th June

08:30: Room N: T033 Two Processing Options for Suppressing VSP Migration Artifacts and Noise

M. Lou (VSFusion), D. Cheng (VSFusion) & F. Doherty (VSFusion)*

08:30: PosterBox 01: P241 A Regularization Workflow for the Processing of Cross-Spread COV Data

G. Poole (CGGVeritas), P. Herrmann (CGGVeritas), E. Angerer (OMV) & S. Perrier (CGGVeritas)*

09:20: Room L: U035 The Benefit of TTI Reverse Time Migration for Subsalt Imaging, Gulf of Mexico

T. Huang (CGGVeritas), Y. Zhang (CGGVeritas) & H. Zhang (CGGVeritas)*

09:20: Room B1: X035 Surface Consistent Full Wave Imaging from Topography for Complex Structures

X. Miao (CGGVeritas) & M.G. Kirtland Grech (CGGVeritas)*

10:55: Room B1: X038 First Arrival Coda Analysis in Converted-Wave Seismic Data

M. Roizman (CGGVeritas) & K. De Meersman (CGGVeritas)*

10:55: Room N: T038 AVO and Anisotropy Analysis of Walkaway VSP Data from the Oselvar Discovery

V. Lesnikov (VSFusion) & K. Gyldenholm (DONG E&P Norway AS)*

11:45: PosterBox 01: P248 Overburden Heterogeneity Effects in Migration Velocity Analysis – A Case Study in an Offshore Australian Field

M.T. Takanashi (Japan Oil, Gas and Metals National Corp.), M.F. Fujimoto (INPEX Browse Ltd) & D. Chagalov (CGGVeritas (currently with Chevron ETC))*

14:45: Room L: U044 Wave-Phase Information Based Full Waveform Inversion

Y. Zhang (CGGVeritas) & D. Wang (CGGVeritas)*

16:20: PosterBox 06: P327 Long Spreadlength Walkaway NMO Approximations for Layered VTI Models

E. Blias (VSFusion)*