

# CE8R4

## New Features and Improvements



# CE8R4 NEW FEATURES

**eLOG:** Simple Script Builder, Export Synthetic Traces in Depth Domain

**Log Correlation:** Automatic Stretch

**ISMAP:** Import ASCII Seismic Data with Multiple Columns, Export all Simulation Maps

**External Links:**

OpenSpirit Well Log Exchange (Windows, Linux and Solaris)

OpenWorks R5000 Well Log Exchange (Linux and Solaris)

SeisWorks R5000 (Linux 32-bit and Solaris)

**General:** RedHat Linux Enterprise 5 Support

# eLog

## Log Math Simple Script Builder

The Log Maths feature has been improved to include a simple script builder designed especially for Log Classification. Now you can create classified logs without having to attend Programming night school classes just to be able to write the script!

Script Option

Define simple script

Supply a script

**Math Menu**

Equation

IF SWA\_1 >= <Value> 2 AND

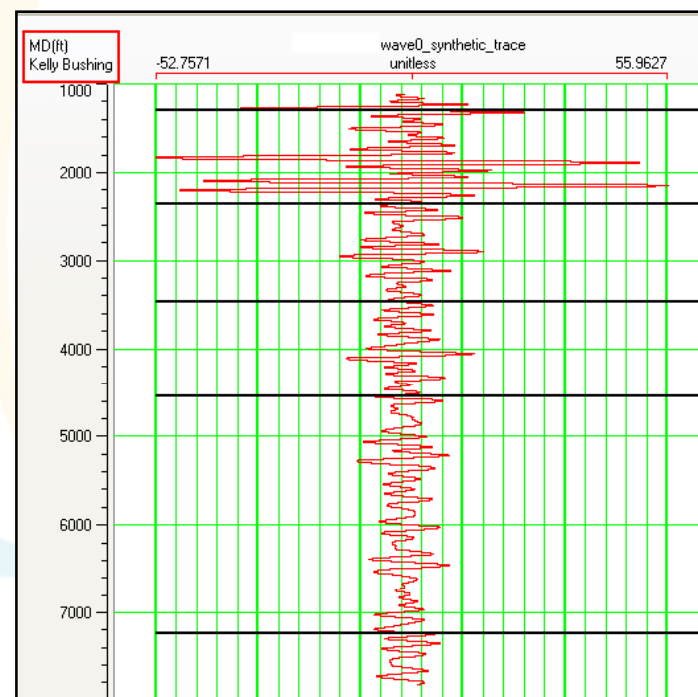
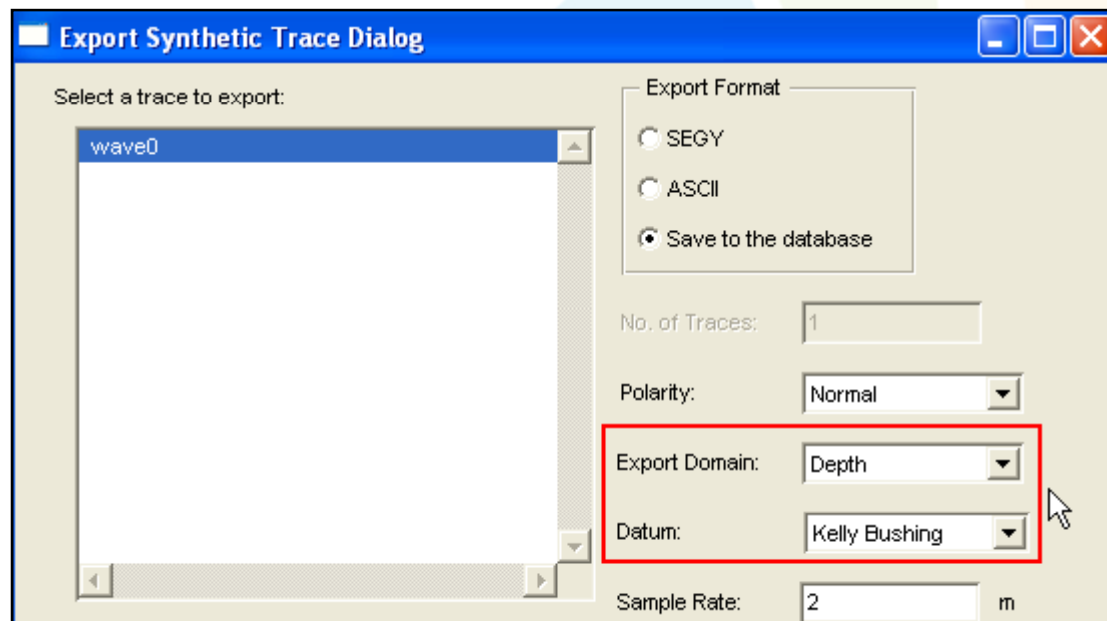
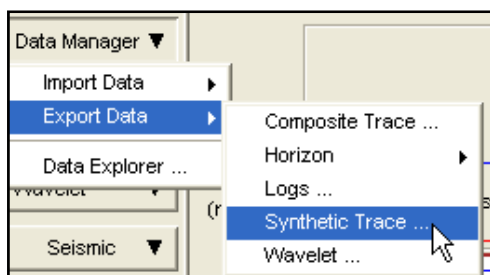
Output = 1

```
IF VSHL_1 >= "82.00000" THEN  
Amp = "10"  
IF VSHL_1 <= "82.00000"
```

# eLog

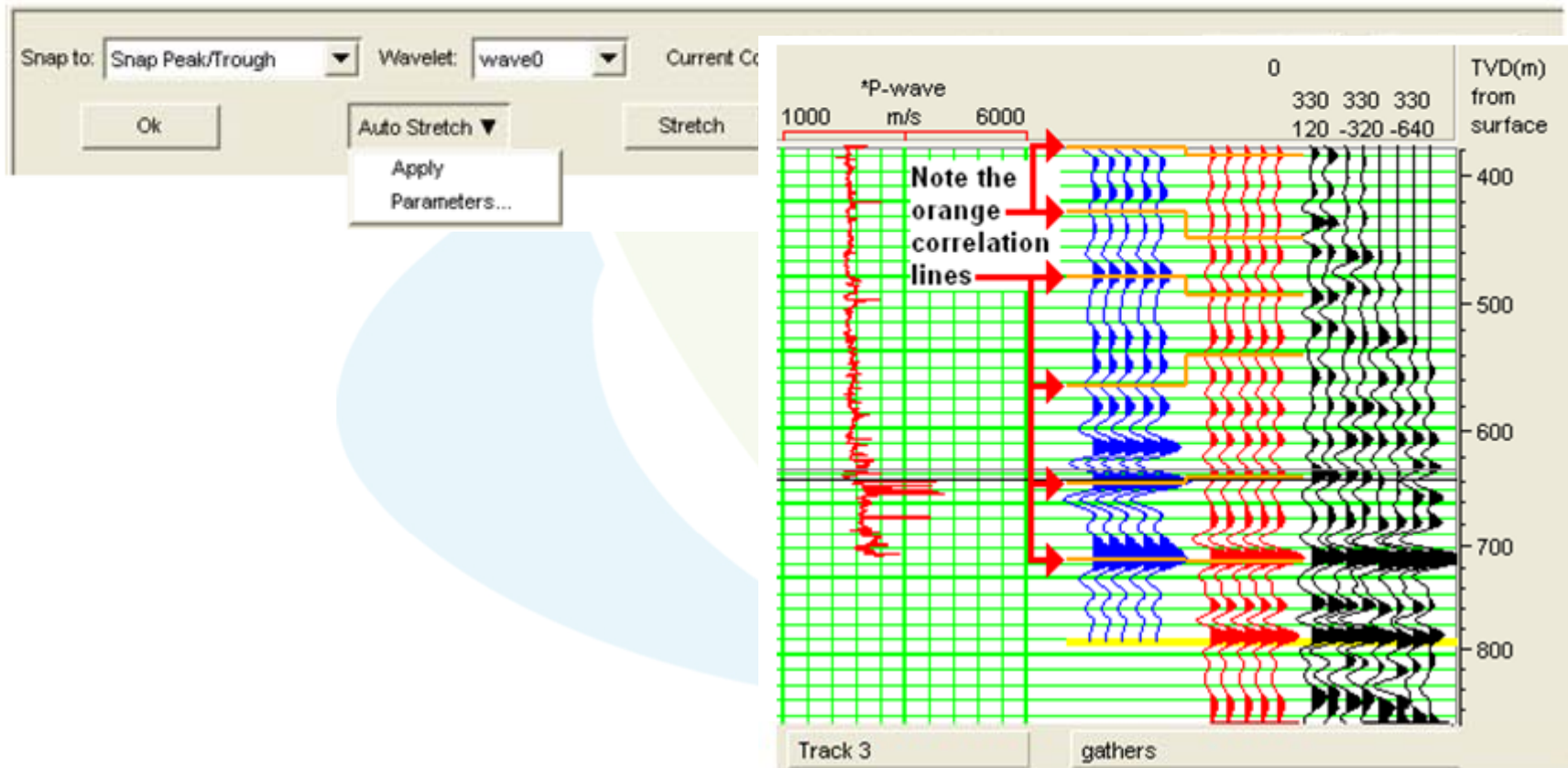
## Export Synthetic Traces in Depth Domain

You can now export your synthetic seismic traces in the Depth Domain – so you can directly compare your synthetic with your other well logs in Geoview.



# Log Correlation Automatic Stretching

The Auto Stretch function correlates a synthetic to a seismic trace automatically instead of manually.



# ISMap

## Import Multiple Attributes from One ASCII File

Now you can read in more than one attribute from a single ASCII file.

Seismic Data ASCII Format Menu

Specify the format of the ASCII seismic file:

Uniformly Gridded Display file ...

Number of X values per row :

Start X-coordinate :

X Increment :

Number of rows (Y values) :

Start Y-coordinate :

Y Increment :

X-coordinate Column :

Y-coordinate Column :

**Value Column(s) :**   
Enter a single number (eg, 3) or a range (eg, 3-5)

Read Attribute Name in Row:

Number of lines to skip (including attribute name) :

Minimum Acceptable Value:

Maximum Acceptable Value:

Ok Reset Cancel Help

# ISMap

## Export all Simulation Maps

Export all of the Sequential Gaussian Simulation Map results.

